



In the heart of Central
New World Tower

Wellness & Lifestyle Hub



Features

- Renowned Grade-A commercial landmark
- Curated selection of premium retail, wellness, and lifestyle offerings
- Designed to support modern work-life balance

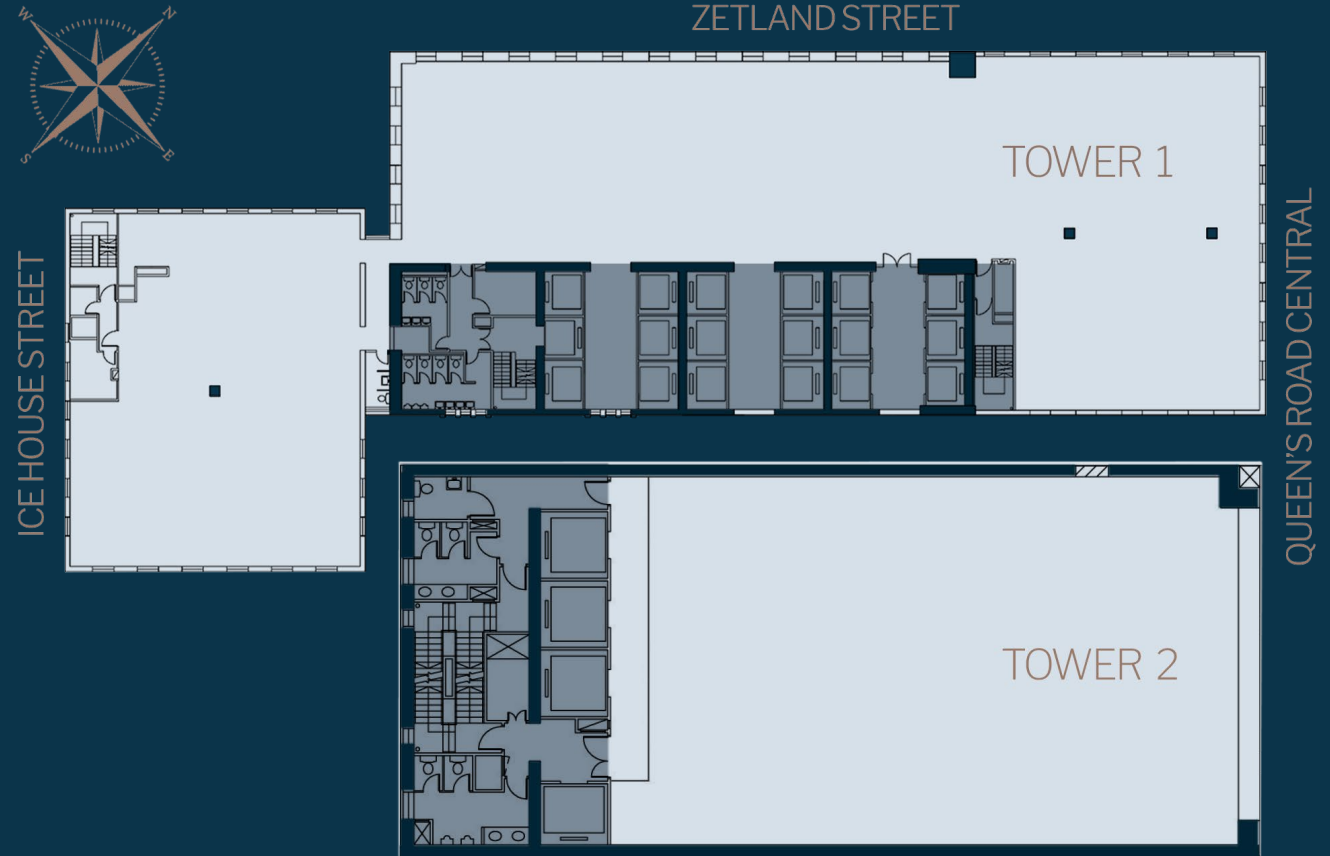
Professional and Wellness Ecosystem

- ✓ Financial services: legal firms, banks, investment offices
- ✓ Medical services: clinic, specialist, physio
- ✓ Fitness & self-care: gym, pilates, facial

General Particulars

Area Range	Approx 400 sf – 13,900 sf
Floor to Floor Height	New World Tower I: Approx. 3.05m – 3.35m New World Tower II: Approx. 3.20m – 3.30m
Floor Loading	<ul style="list-style-type: none"> 3kPa
Air-conditioning Supply Hours	Mon – Sat (Except Sunday and Public Holiday) 08:30 – 18:00 * Subject to change
Extra Air-Conditioning Charge	Tower I (Office): \$500 / hour Tower II (Office): \$300 / hour * Subject to change
Lifts	17 Passenger Lifts (Tower I) 3 Passenger Lifts (Tower II) 1 Cargo Lift for each Tower
Carpark	Ample carparking spaces & EV chargers
Neighbourhood	<ul style="list-style-type: none"> New World Tower is strategically located at the heart of the financial hub of Hong Kong. Apart from renowned financial institutions (such as Hong Kong Stock Exchange and Hong Kong Monetary Authority), consulates of various countries are also located in this prestigious commercial district.

Typical Floor Plan



*All Floor plans are for reference only



12 mins to Kowloon Station

30 mins to HK International Airport

Stay connected with us

